

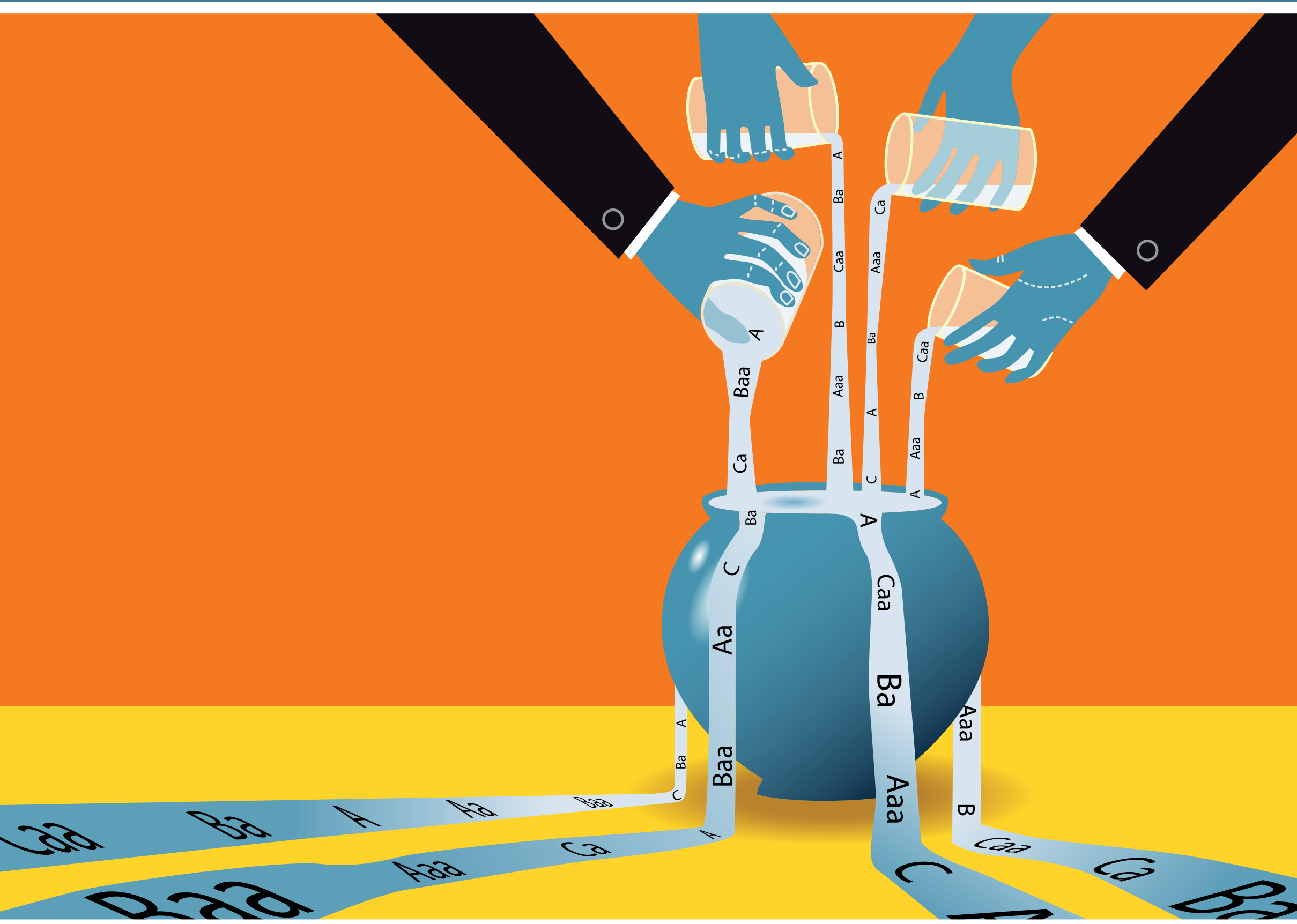


Credit Risk Evaluation
Designed for Institutional
Targeting in finance

Rischio di Credito, Rischio Sistemico e Grandi Portafogli

30 settembre | 1 ottobre 2010

Scuola Grande
di San Giovanni Evangelista
Venezia



COMITATO SCIENTIFICO

Alain Monfort

CREST, Banque de France e Maastricht University
(Programme Chair)

Yacine Aït-Sahalia

Princeton University

Monica Billio

Università di Venezia e GRETA

Damiano Brigo

Fitch Solutions, London e Imperial College

Patrick Gagliardini

University of Lugano e Swiss Finance Institute

Christian Gouriéroux

University of Toronto e CREST

John Hull

University of Toronto

Dirk Tasche

Lloyds Banking Group, London

RELATORI INVITATI

Yacine Aït-Sahalia

(Princeton University)

Damiano Brigo

(Fitch Solutions, London e Imperial College)

Christian Gouriéroux

(University of Toronto e CREST)

John Hull

(University of Toronto)

Dirk Tasche

(Lloyds Banking Group, London)

SEGRETARIA ORGANIZZATIVA

OLTREX 4M SpA

Santa Croce 466/E

I - 30135 Venezia

Tel. +39.041.2411151

Fax +39.041.2776653

gretainfo@oltrex.it

Poster Session

Tavola rotonda:

"Stabilità e regolamentazione
del sistema finanziario
e crescita economica"

Moderatore: Fabrizio Galimberti

(Il Sole 24 Ore, Milano)

<http://www.greta.it/credit/credit2010/credit2010.htm>

Sponsor



INTESA SANPAOLO



SIM di consulenza

Cerved Group



FINANZIARIA INTERNAZIONALE



Università
Ca' Foscari
Venezia
Dipartimento
di Scienze
Economiche

Con il patrocinio

ABI Associazione
Bancaria
Italiana

European
Investment
Bank

ASSOGESTIONI
associazione del risparmio gestito



Credit Risk Evaluation
Designed for Institutional
Targeting in finance

Credit Risk, Systemic Risk, and Large Portfolios

30th September | 1st October 2010

Scuola Grande
di San Giovanni Evangelista
Venice



SCIENTIFIC COMMITTEE

Alain Monfort

CREST, Banque de France and Maastricht University
(Programme Chair)

Yacine Aït-Sahalia

Princeton University

Monica Billio

University of Venice and GRETA

Damiano Brigo

Fitch Solutions, London and Imperial College

Patrick Gagliardini

University of Lugano and Swiss Finance Institute

Christian Gouriéroux

University of Toronto and CREST

John Hull

University of Toronto

Dirk Tasche

Lloyds Banking Group, London

INVITED SPEAKERS

Yacine Aït-Sahalia

(Princeton University)

Damiano Brigo

(Fitch Solutions, London and Imperial College)

Christian Gouriéroux

(University of Toronto and CREST)

John Hull

(University of Toronto)

Dirk Tasche

(Lloyds Banking Group, London)

CONFERENCE ORGANISING SECRETARIAT

OLTREX 4M SpA

Santa Croce 466/E

I - 30135 Venezia

Tel. +39.041.2411151

Fax +39.041.2776653

gretainfo@oltrex.it

Poster Session

Panel Session:

"Systemic stability,
financial regulation and
economic growth"

Chairman: Fabrizio Galimberti

(Il Sole 24 Ore, Milan)

<http://www.greta.it/credit/credit2010/credit2010.htm>

Organisers and Sponsor

Under the auspices

